

237 Kings Road, Chorlton, Manchester, M21 0XG



**JP&Brimelow**  
ESTATE AGENTS

# Offers In The Region Of £575,000

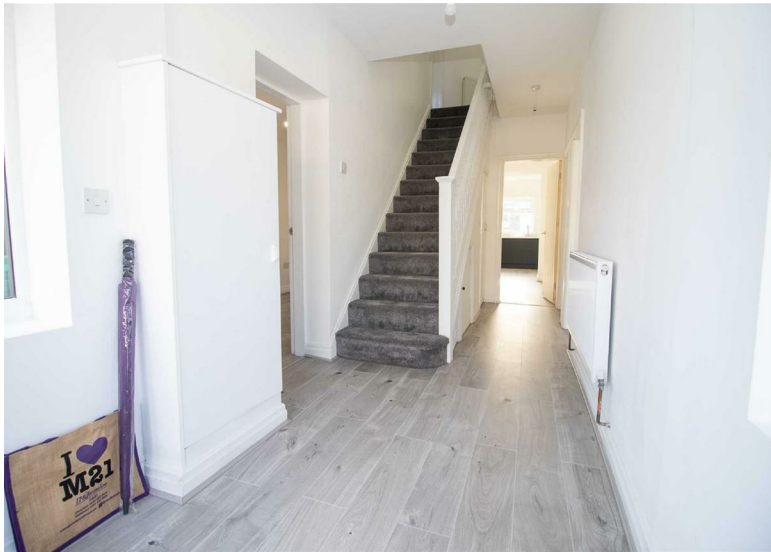
**\*\*VIDEO TOUR AVAILABLE\*\*** A beautifully presented & tastefully extended, FIVE BEDROOMED, bay fronted, traditional, semi-detached property positioned in a highly popular residential area off St Werburghs Road here in Chorlton.

Within a fifteen-minute walk of the popular bars/restaurants/café on Beech Road, Chorlton Park, primary/secondary schools nearby and the Metrolink station on St Werburghs Road giving you direct access into the city centre/Media City/International Airport. Whalley Range Tennis & Cricket club are nearby with Hough End playing fields a twenty-minute walk away.

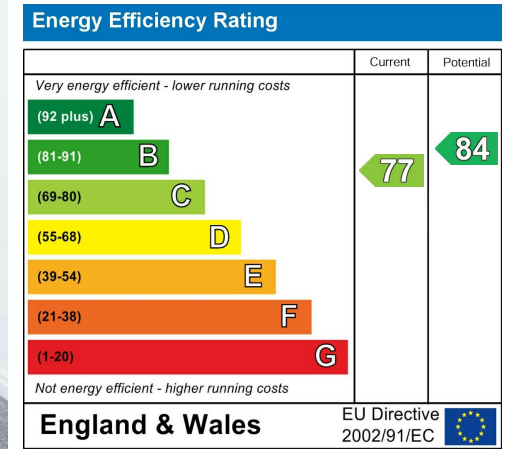
This fully refurbished home has had a complete back to brick project, whilst being extended to suit modern living. The immaculately presented accommodation comprises; porch, entrance hallway, downstairs W.C, an office/play room, a through lounge/family room, an extended open plan fitted kitchen/breakfast/Dining room with French doors to the ground floor giving you access into the rear enclosed lawned garden and a utility room completes the ground floor.

To the first floor there is a landing leading to five, well-proportioned bedrooms, the master bedroom at the rear benefits from a three-piece ensuite shower room and a fitted three-piece family bathroom to the front aspect.



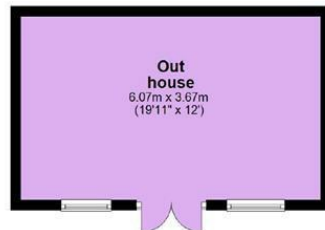


## EPC Chart



Tenure: Freehold Council Tax Band: C

### Ground Floor



### First Floor



Chorlton & Didsbury Ltd  
430 Barlow Moor Road, Chorlton, Manchester, M21 8AD  
Chorlton: 0161 882 2233 Didsbury: 0161 448 0622  
E: chorlton@jpbrimelow.co.uk www.jpbrimelow.co.uk



**JP & Brimelow**  
ESTATE AGENTS

NOTICE: J P & Brimelow Chorlton & Didsbury Ltd for themselves and for the vendors or lessors of this property whose agents they are give notice that:

- (i) the particulars are set out as a general outline only for the guidance of intending purchasers or lessees, and do not constitute, nor constitute part of, an offer or contract;
- (ii) all descriptions, dimensions, references to the condition and necessary permissions for use and occupation, and other details are given in good faith and are believed to be correct but any intending purchasers or tenants should not rely on them as statements or representations of fact but must satisfy themselves by inspection or otherwise as to the correctness of each of them;
- (iii) no person in the employment of JP & Brimelow Ltd has any authority to make or give any representation or warranty whatever in relation to this property.



Follow us on Twitter @jpandbrimelows